

Introduction

Holger Thomas FERSTL

Dr.med.univ. ; B.Ac.

- **Tactical Physician / Military Advisor / Remote Area Medicine – Austrian Armed Forces**
- **Chairman Austrian Society for maritime Health and Safety at Sea (ASMHSS)**
- **Diving Physician (DMAC, EUBS, EDTC)**
- **Aquamed Medical Board**
- **Resortdoc Medical Service**
- **Diving Instructor / Trimix / Rebreather**
- **Yachtmaster Licence**





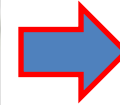
24/7

WORLDWIDE MEDICAL ASSISTANCE

FIRST CONTACT TO REMOTE AREA TRAINED PHYSICIAN

**ASSISTANCE
COORDINATION (CASEVAC)
CONSULTING (TRAVELMEDICINE)
CLINICAL SUPPORT (EXPERT ADVICE)
REPATRIATION
TRACKING (VESSEL SUPPORT)**

INSURANCE GUARANTEE



MEDICAL BOARD

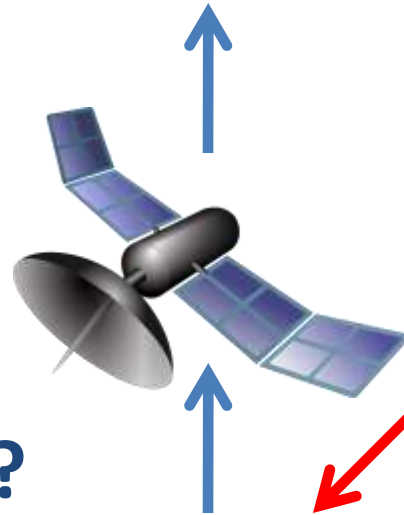


ONSHORE MEDIKIT (LEVEL 1)

OFFSHORE MEDIKIT (LEVEL 2)



?



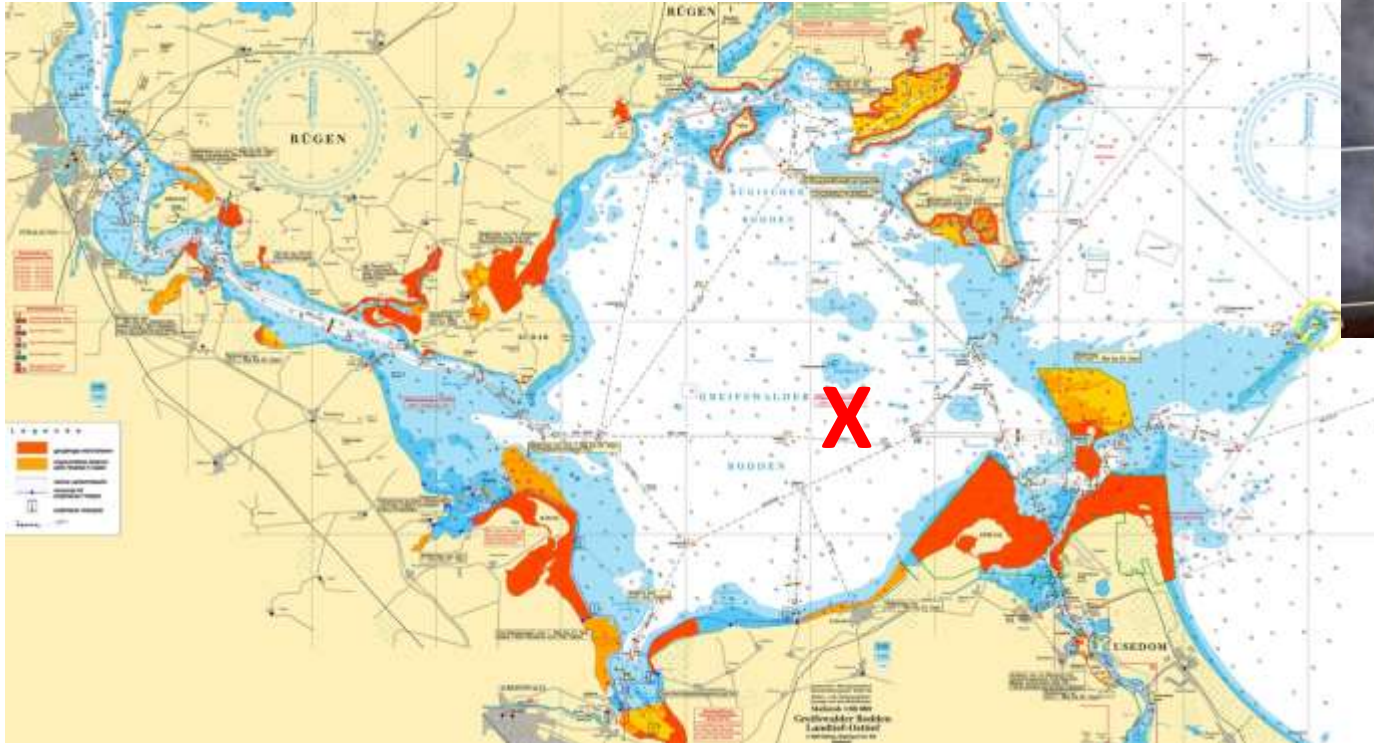
MEDICAL TRAINING

**COASTAL (LEVEL 1)
OFFSHORE (LEVEL 2)**



CASE 1 ONSHORE

23:00 HEAVY WEATHER NIGHT SAILING -
SHOULDERDISLOCATION





CASE 1 ONSHORE



URGENCY MEDEVAC ???

Not urgent

Next TraumaClinic:

Uniklinik Greifswald,
Fleischmannstraße 8,

Phone: +49 3834 860

Pos: 54° 5' 18" N , 13° 24' 19" O



MOBILITY
CIRCULATION
SENSIBILITY



**Relocation guided by
physician – only
offshore !!!**

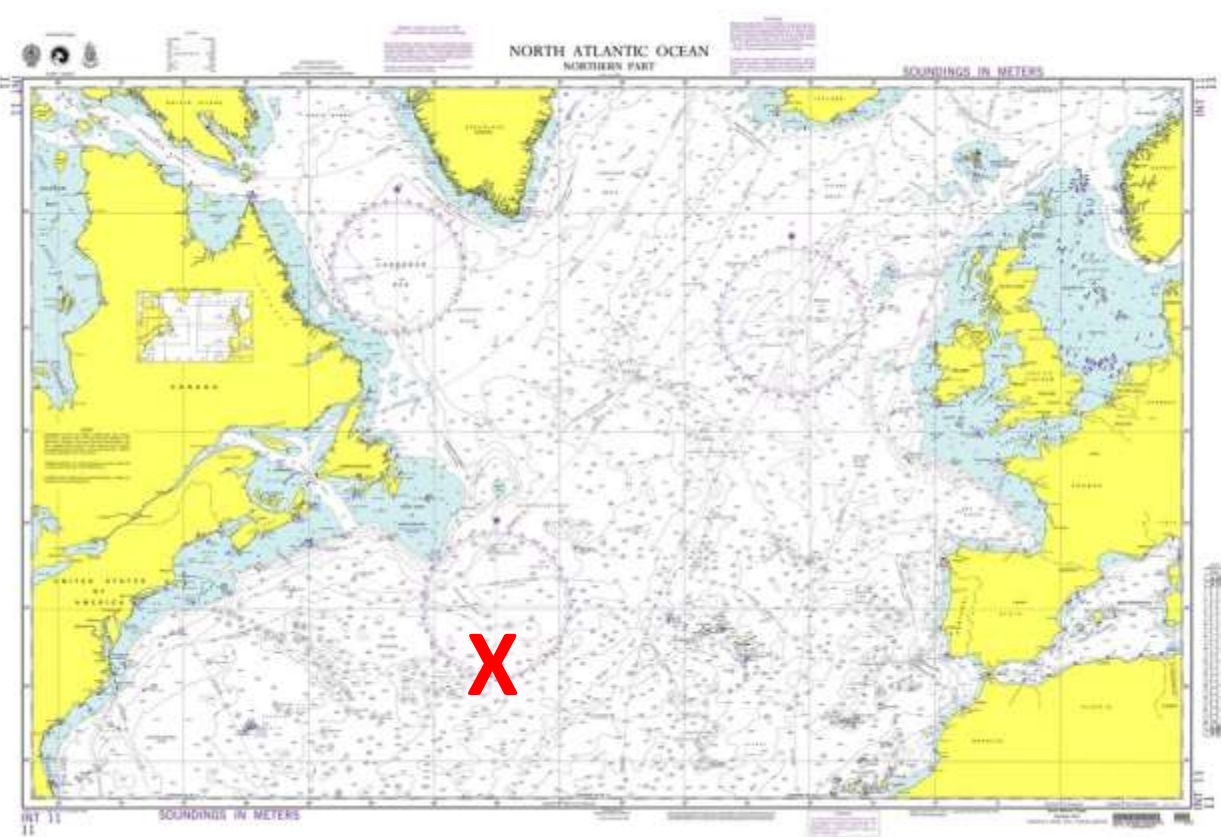
**Urgent
Casevac by Heli or Boat**

Insurance will take care of payment procedures



CASE 2 OFFSHORE

Lower leg abrasion – Genuasheet
febrile Infection due to saltwater contamination
prox. 7 days to Acores





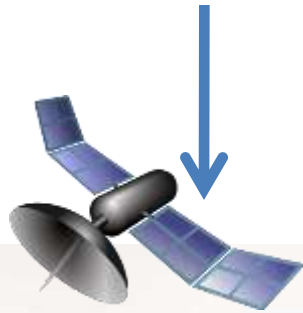
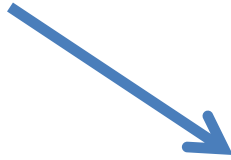
CASE 2 OFFSHORE



Treatment under telemedical assistance and advice



Onbord Medikit ?
Medical trained ?



Symptoms
Description
Photo?



**AIS / GPS near Vessel Tracking
for drug / medical support
(Antibiotics)**



Skipper Med Card



24 / 7 Medical Assistance Worldwide

Travel Health Insurance

Treatment / Repatriation

Medical pre-travel consultation

Offshore Medical Training

Offshore Medical Equipment





Skipper Med Card

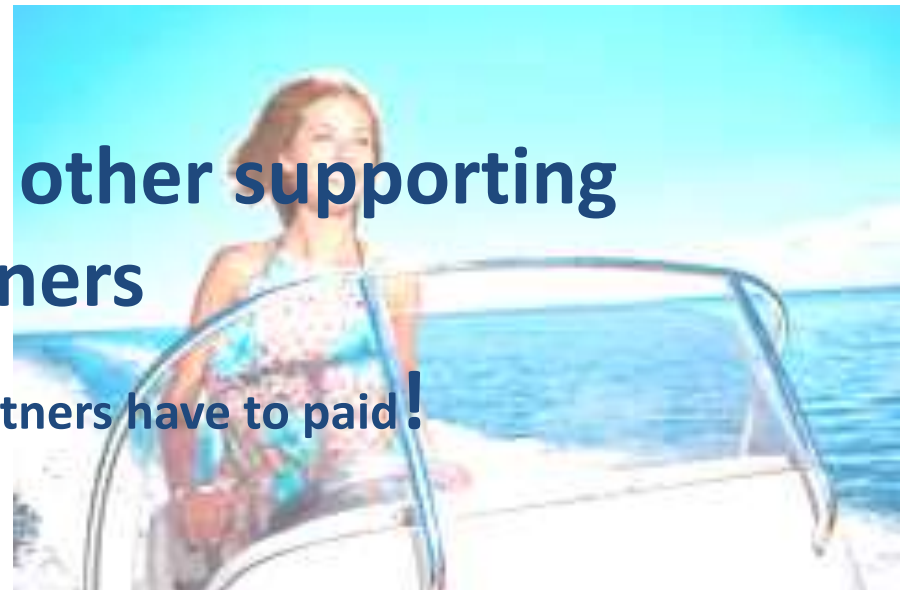


**24 / 7 Emergency Assistance
Worldwide**

**Help and Assistance for all
emergency cases**

**If you don't reach other supporting
partners**

Some comercial partners have to paid!





Skipper Med Card



Case I



Somewhere 800 NM northeast of Martinique, a yacht, for whatever reason, has no diesel



Skipper Med Card



Case I



The skipper can not contact the next MRCC or can not communicate with them (because of the language)





Skipper Med Card



We communicate with all:



**The Skipper
calls us, we call
the MRCC to
organize help**





Skipper Med Card

Case II



This is the
Club de
yates
Higuerillas,
Valparaiso,
Chile, at the
8th of
August 2015



Skipper Med Card



Case II



With our contacts and partners we organize the surveyor. The service of our partners has to be paid, hopefully from your insurance.



Skipper Med Card



Case III



Becalmed Yacht with engine broken down drifts ashore (Turkey/August/2015). We organize a mechanic who repairs the engine.

This service has to be paid.



Skipper Med Card



Assistance in all cases!

Skipper Med Card

.....and you'll be safe